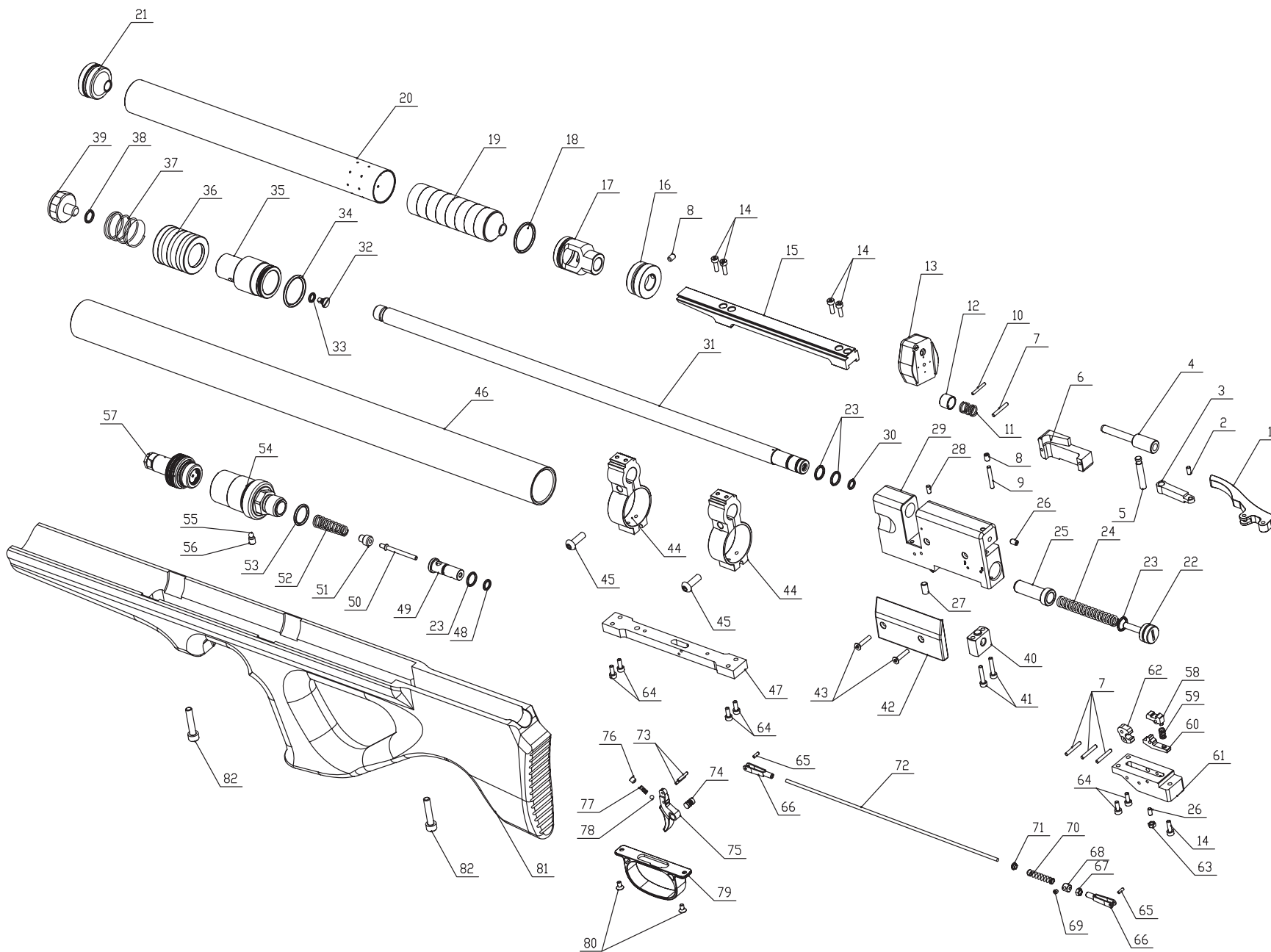


Ersatzteile | Spare Parts

skyhawk



DIANA®

Mayer & Grammelspacher GmbH & Co.KG
Postanschrift:
Oesterweg 21 | 59469 Ense

Service:
Auf den Geeren 23 | 59469 Ense

Telefon: 02938 97837 - 60
Telefax: 02938 97837 - 162
info@diana-airguns.de

www.diana-airguns.de

Technische Änderungen und Fehler vorbehalten!

Ersatzteile | Spare Parts

skyhawk

POS-No.	Art-No.	Description	Qty.
1	181-001	Side Bolt	1
2	181-002	Side Bolt Pin D3-6.8	1
3	181-003	Connecting Block	1
4	181-004-2	Breech Probe 4,5mm	1
5	181-005	Breech Probe Pin	1
6	181-006	Side Plate	1
7	181-007	Breech Pin D2.5-18	4
8	181-008	Breech Screw M4X6	2
9	181-009	Breech Pin D3-20	1
10	181-010	Breech Pin D2-16	1
11	181-011	Breech Probe Recovering Spring	1
12	181-012-2	Breech Probe Sleeve 4,5mm	1
13	181-013-2	Magazine Assembly 4,5mm	1
14	181-014	Rail Stand Screw M3x10	5
15	181-015	Rail Stand	1
16	181-016	Suppressor Tube Rear Cover	1
17	181-017	Suppressor Separation	1
18	181-018	Suppressor O-Ring	1
19	181-019	Suppressor Separation Cover	8
20	181-020	Suppressor Tube	1
21	181-021	Suppressor Tube Front Cover	1
22	181-022	Regulating Bolt	1
23	181-023	Regulating Bolt O-Ring D12-1.5	4
24	181-024	Hammer Spring	1
25	181-025	Hammer	1
26	181-026	Breech Rear Screw M3x6	2
27	181-027	Breech Bottom Screw M6x10	1
28	181-028	Magnet 2	1
29	181-029	Breech	1
30	181-030-2	Breech O-Ring D7.5-1.5	1
31	181-031-2	Barrel 4,5mm	1
32	181-032	Intake Valve Screw	1
33	181-033	Intake Valve Screw O-Ring D8-1.5	1
34	181-034	Intake Valve D27-2.4	1
35	181-035	Intake Valve	1
36	181-036	Intake Valve Cover	1
37	181-037	Intake Valve Cover spring	1
38	181-038	Pressure Gauge O-Ring D8-1.5	1
39	181-039	Pressure Gauge	1
40	181-040	Breech Connecting Block	1
41	181-041	Breech Connecting Block Screw M3x16	2

POS-No.	Art-No.	Description	Qty.
42	181-042	Checking Piece	1
43	181-043	Checking Piece Screw M3x16	2
44	181-044	Air Reservoir Mount	2
45	181-045	Air Reservoir Mount Screw M5x16	2
46	181-046	Air Reservoir	1
47	181-047	Trigger Fixing Plate	1
48	181-048	Valve O-Ring D9-1.5	1
49	181-049	Valve	1
50	181-050	Valve Needle	1
51	181-051	Valve	1
52	181-052	Valve Spring	1
53	181-053	Valve Connector O-Ring D18-2	1
54	181-054	Valve Connector	1
55	181-055	Detent Ball D4.0	1
56	181-056	Valve Connector Screw M5x6	1
57	181-057	Constant Pressure Assembly	1
58	181-058	On-Hook Block	1
59	181-059	Sear Recovering Spring	1
60	181-060	Firing Block	1
61	181-061	Trigger Housing	1
62	181-062	Firing Lever	1
63	181-063	Trigger House Nut M3	1
64	181-064	Firing Base Pin	6
65	181-065	Firing House Pin D2-12	2
66	181-066-1	Left Turn Buckle	1
	181-066-2	Right Turn Buckle	1
67	181-067	Cocking Rod Nut M2.5	1
68	181-068	Adjustment Block	1
69	181-069	Adjustment Block Screw M3x3	1
70	181-070	Cocking Rod Spring	1
71	181-071	Cocking Rod Mattress	1
72	181-072	Cocking Rod	1
73	181-073	Trigger Pin D2-6	2
74	181-074	Safety	1
75	181-075	Trigger	1
76	181-076	Trigger Screw M4x4	1
77	181-077	Safety Spring	1
78	181-078	Detent Ball 3.175	1
79	181-079	Trigger Guard	1
80	181-080	Trigger Guard Screw M3x6	2
81		Wood Stock	1
82	181-082	Wood Stock Screw M5x25	2